

ZAP Data Hub for SYSPRO

Analytics eBook





ZAP Data Hub for SYSPRO

Revolutionize your organization's approach to decision making and become a data-driven and analytics powerhouse with ZAP Data Hub

Pre-built analytics to fast-track your project

The ZAP Data Hub pre-built analytics cover most SYSPRO modules



Some of our ZAP Data Hub analytics are also pre-built for Power BI and are available from Microsoft AppSource.



Financials

- Chief Financial Officer dashboard
- Cash Flow dashboard
- Expenses Analysis dashboard
- 20+ Profit or Loss, Balance Sheet, and Trial Balance report templates
- Accounts Payable Manager dashboard
- Accounts Receivable Manager dashboard



Distribution/Supply Chain

- Inventory Manager dashboard
- Several Inventory reports/ analytics
- Days of Supply / Slow Moving Inventory
- Several procurement dashboards
- Several sales/purchasing dashboards
- Customer/Vendor delivery performance



Manufacturing

- Production Overview dashboard
- Delivery Performance dashboard
- Several manufacturing reports/ analytics



At-a-Glance reconciliation

- Financials At-a-Glance dashboard
- Inventory At-a-Glance dashboard
- WIP At-a-Glance dashboard

Technical checklist

Every plan of ZAP Data Hub for SYSPRO includes the following by default:

Data model

- Rich Connectivity to SYSPRO Data, with Automatic Metadata Extraction, Friendly Names, and Recommendations
- Automated company consolidation
- Multi-section support
- Pre-built customizable chart of accounts
- Extensible, add new tables or data sources
- Fast incremental refreshes

Platform

- Included Data Storage in Microsoft Azure
- Included support, software, and infrastructure maintenance
- Strong data security and governance
- Use your corporate identity provider or the ZAP default user authentication
- Open and secure data warehouse for direct connectivity or for integration
- Pre-Built Power BI Analytics

Analytics

- For inventory, manufacturing, sales, purchasing, accounts receivable, accounts payable, and general ledger
- Our of-the-box analytics, including at-a-glance reconciliations
- Fully customizable analytics
- Multi-company, calendar, and currency consolidation
- Rich, cross-functional, cross module analysis
- Fully interactive and explorable analytics
- Automate dynamic multi-page documents
- Distribute up-to-date analytics or documents by e-mail

Accounts Payable Manager Dashboard

This dashboard includes the following resources:

- Open Transactions Card
- Overdue Payables by Age
- Top 10 Overdue AP
- Top 10 Suppliers with Largest Overdue AP
- Current Payables by Age
- Top 10 Current AP
- Top 10 Suppliers with Largest AP Balance Not Past Due
- Average Days to Pay
- Top Open Accounts Payable
- Top 15 Overdue Suppliers

Key metrics to get you started including:

- Average Days Overdue
- Average Days to Pay
- Average Amount/Invoice



Accounts Receivable Manager Dashboard

This dashboard includes the following resources:

- Open AR Items Card
- Overdue Receivables by Age
- Current Receivables by Age
- Performance MTD Card
- Top 10 Overdue AR
- Top 10 Customers by Overdue AR
- Top 10 Current AR
- Top 10 Customers by AR Not Past Due
- Collection Effectiveness Analysis Over Time
- Average Days to Pay
- Collection Effectiveness Index (CEI) Vs. Days Sales Outstanding (DSO)
- DSO Vs Average Days Delinquent (ADD)

Key metrics to get you started including:

- Average Days Overdue
- Average Days to Pay
- Collection Effectiveness Index (CEI)
- Days Sales Outstanding (DSO)
- Best Possible DSO (BDSO)
- Average Days Delinquent (ADD)



Chief Financial Officer Dashboard

This dashboard includes the following resources:

- Performance Card; Activity Card
- Profitability Card
- Liquidity Card; Leverage Card
- Gross Margin Over Time
- AR Gauge, AP Gauge
- Liquidity Ratios Over Time
- Operating Profit Over Time
- Cash to Cash Cycle Over Time
- Profitability Ratios Over Time
- Leverage Ratios Over Time

Key metrics to get you started including:

- Gross Margin
- Operating Profit; OP%
- Cash to Cash Cycle
- Return on Assets
- Return on Equity
- Working Capital
- Working Capital Ratio
- Quick Ratio; Debt Ratio
- Debt to Equity Ratio
- Long Term Debt to Equity Ratio
- DSO, DIO, DPO



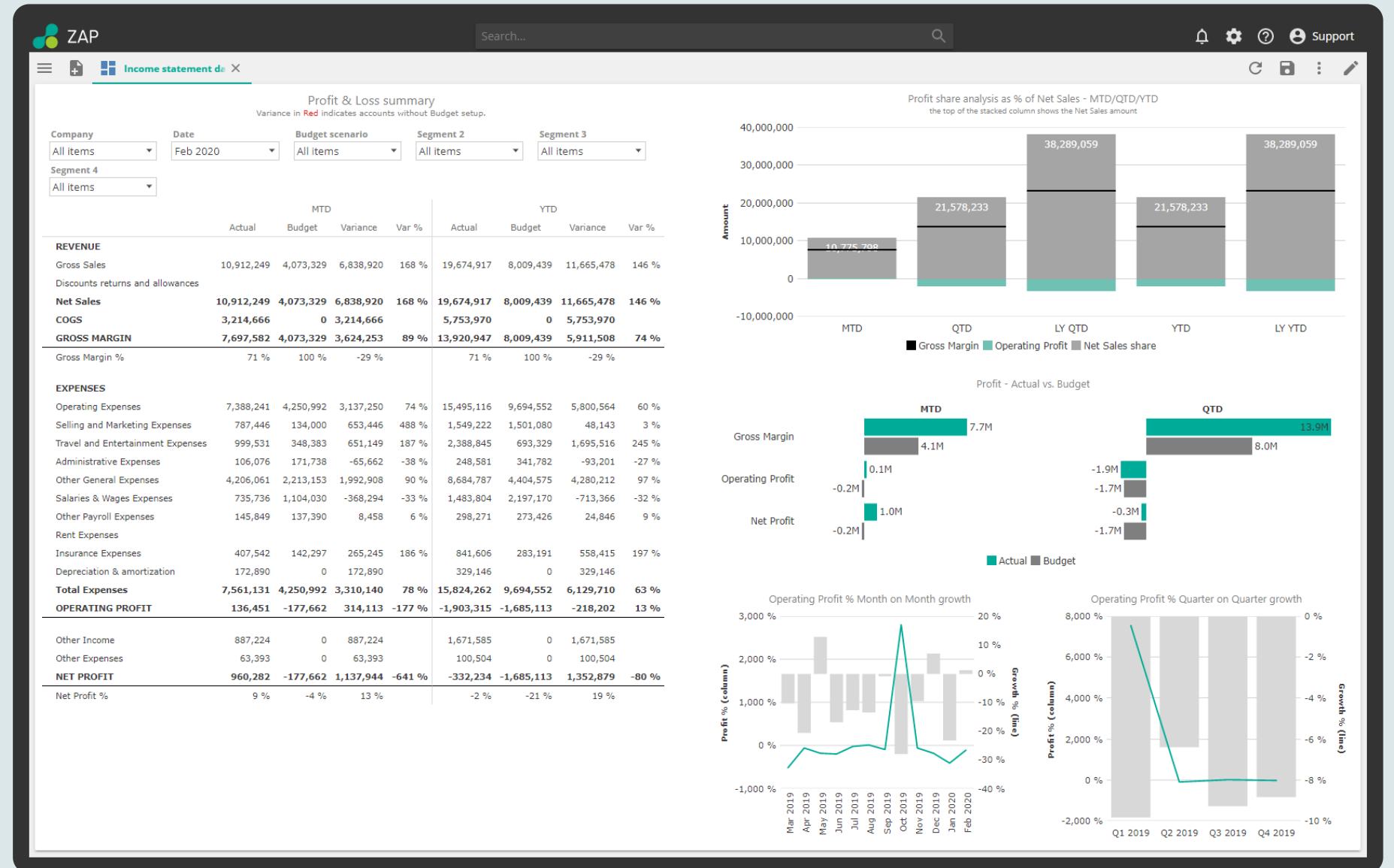
Income Statement Dashboard

This dashboard includes the following resources:

- Income Statement
- Profit Share Analysis as % of Net Sales
- Profit – Actual vs. Budget
- Operating Profit % Month on Month growth
- Operating Profit % Quarter on Quarter Growth

Key metrics to get you started including:

- Gross Margin
- Operating Profit
- Operating Profit %
- EBITDA; EBITDA %
- EBIT; Net Profit
- Net Profit %
- Net Sales Share
- Operating Profit MoM Growth
- Operating Profit QoQ Growth

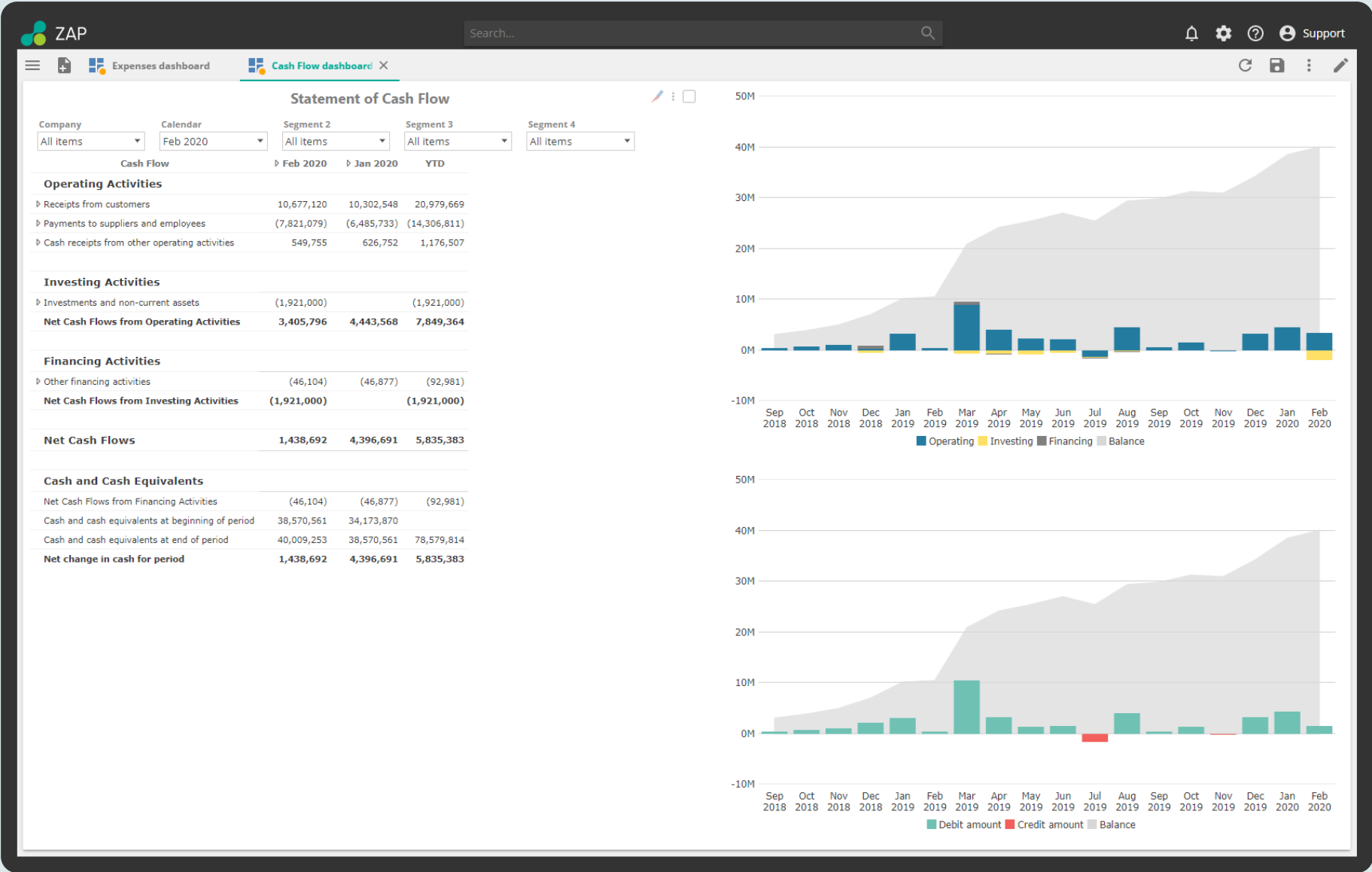


Cash Flow Dashboard

Monitoring all your operational, investing and financing cash flows

The Cash Flow dashboard is the main dashboard for monitoring all your operational, investing and financing cash flows.

ZAP Data Hub for SYSPRO automatically classifies your chart of accounts into account types and cash flow categories, so you don't have to build custom reports. Cash flows can be analyzed by increase/decrease, categories, and dimensions over time.

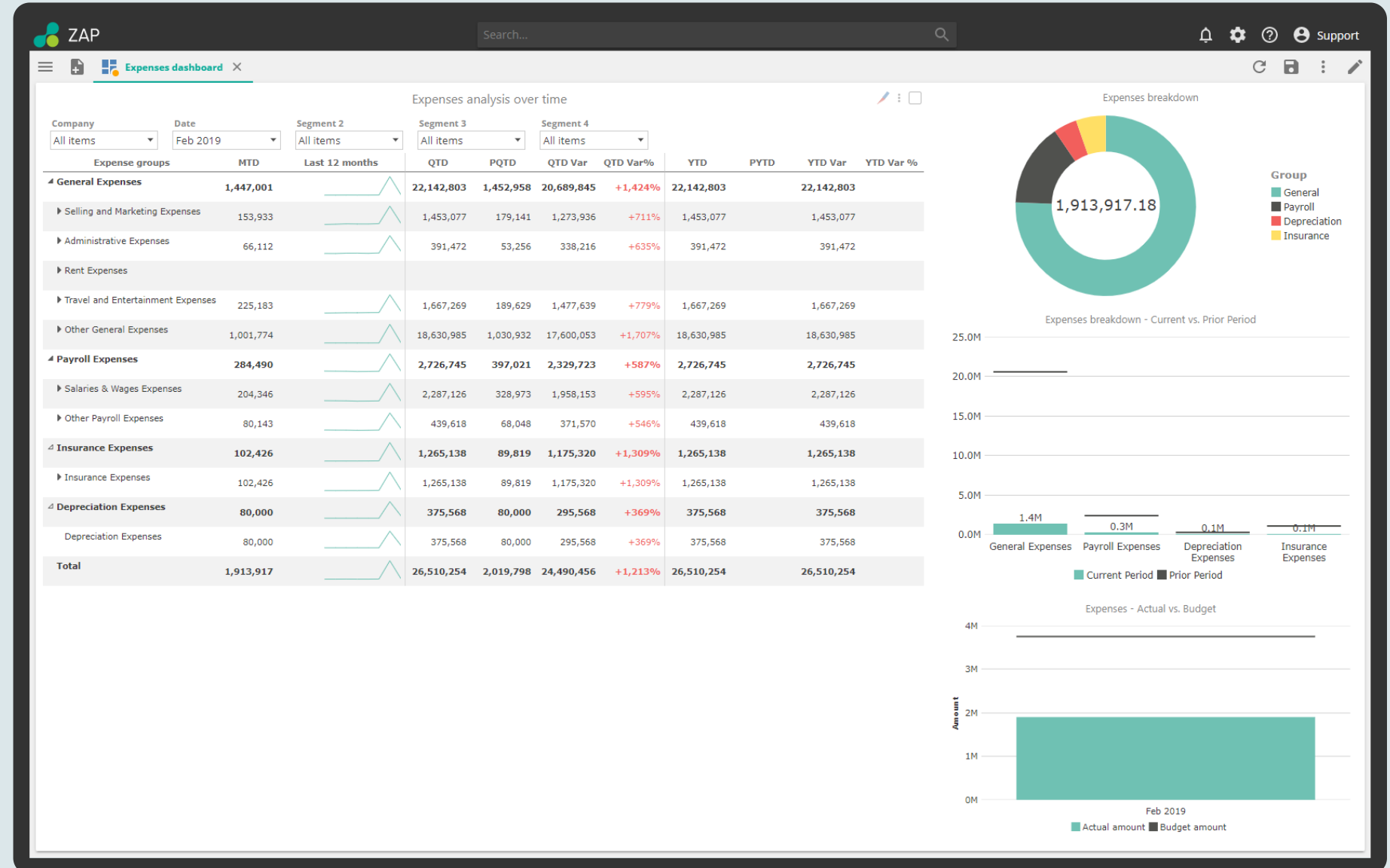


Expenses Analysis Dashboard

Analyze your businesses' expenses by category over time and at-a-glance

Determine the biggest expenses and find outliers that represent opportunities to optimize your costs.

ZAP Data Hub for SYSPRO automatically categorizes your expense accounts into its own account categories, and lets you expand and drill through to see the underlying expense transactions.



Financial Statements and Reports

The solution includes several Financial Statement templates

Standard Statements

- Balance Sheet Summary
 - Monthly Movements
 - Monthly Balances
- Profit & Loss Summary
 - Monthly Movements
- Trial Balance
 - Monthly Movements
 - Movements in FY
- Statement of Cash Flow

Control and Forecast

- Cash Flow Forecast
- Profit & Loss - Budget analysis
- Profit & Loss - Forecast
- Consolidated Balance Sheet by Currency by Company

Consolidated Statements

- Consolidated Balance Sheet by Company
- Consolidated Balance Sheet Statement
- Consolidated Profit & Loss by Company
- Consolidated Profit & Loss Statement

Balance Sheet	
Company	020INC (Sample Cr)
Date	Dec 2019
Segment 2	All Items
Segment 3	All Items
Segment 4	All Items
Closing Balance as at Dec 2019	
ASSETS	
Current Assets	
Accounts Receivable	1,197,359
Cash & Cash Equivalents	4,909,299
Inventory	3,387,842
Prepayments	
Other Current Assets	
Total Current Assets	9,494,499
Non-Current Assets	
Fixed Assets	417,160
Intangible assets	
Other Assets	(658,578)
Total Non-Current Assets	(241,418)
TOTAL ASSETS	9,253,081
LIABILITIES	
Current Liabilities	
Accounts Payable	6,907,207
Credit cards	
Payroll liabilities	
Other Current Liabilities	(3,242)
Total Current Liabilities	6,903,964
Total Non-Current Liabilities	(199,708)
TOTAL LIABILITIES	6,704,257
EQUITY	
Capital	
Dividends	
Retained Earnings	
Current Year Profit	2,548,825
TOTAL EQUITY	2,548,825

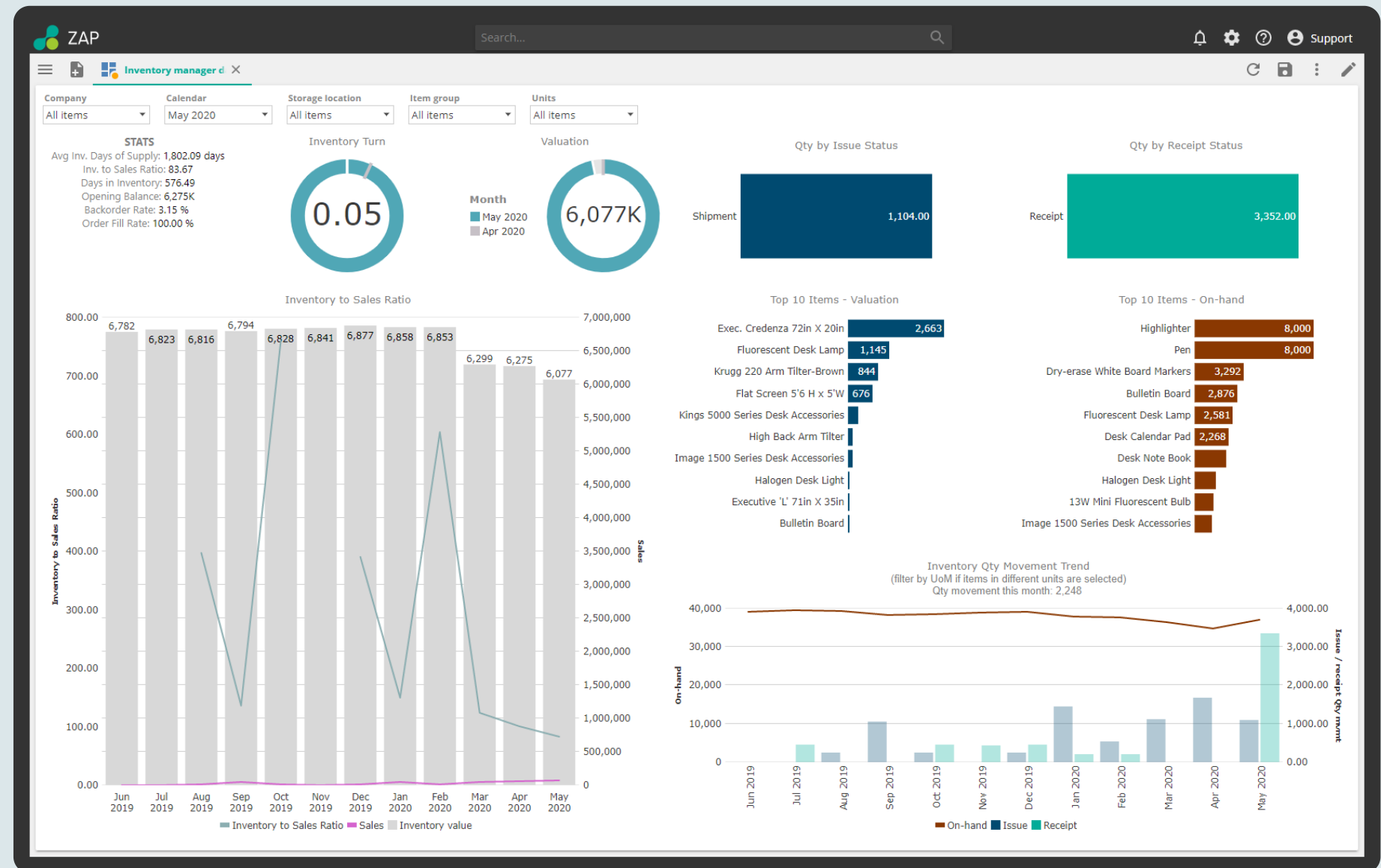
Inventory Manager Dashboard

This dashboard includes the following resources:

- STATS card
- Inventory Turn
- Valuation
- Qty by Issue Status
- Qty by Receipt Status
- Inventory to Sales Ratio
- Top 10 Items - Valuation
- Top 10 Items - On-hand
- Inventory Qty Movement Trend

Key metrics to get you started including:

- Average Inventory Days of Supply
- Inventory to Sales Ratio
- Days in Inventory
- Opening Balance
- Backorder Rate
- Order Fill Rate
- Inventory Turn
- Average Daily Sales Cost
- Average Inventory Valuation



Inventory Days of Supply

The Inventory Days of Supply report lists every item that is slow moving in the inventory

Key metrics

- On-hand
- Current Stock Valuation
- Average Daily Sales Cost
- Average Late Delivery Days
- Average Inventory Days of Supply
- Days of Supply (inc. Delivery Days)

Other Inventory Analytics include:

- Slow Moving Inventory Analysis
- Inventory Aging analysis
- On-hand Inventory
- Item Analysis
- Inventory Turnover Analysis

Inventory Days of Supply (calculated over the last 6 completed months)

Item	On-hand	Inventory Valuation	Avg Daily Sales Cost (CM)	Avg Late Delivery Days	Avg Inventory Days of Supply (CM)	Days of Supply (Incl. Delivery Days)
Fluorescent Desk Lamp	2,881	1,144,785.93	3,172.65	275.2 days	-	-275.21 days
13W Mini Fluorescent Bulb	1,280	6,448.13	0.00	306.1 days	-	-306.14 days
Halogen Desk Light	1,408	49,766.01	26.82	272.0 days	-	-272.04 days
50W/12V Halogen Bulb	964	2,339.57	27.49	300.7 days	-	-300.68 days
Desk Note Book	2,208	23,376.96	71.11	278.6 days	-	-278.57 days
Desk Calendar Pad	2,328	19,958.65	46.89	223.6 days	-	-223.57 days
Bulletin Board	2,956	31,897.75	22.74	242.5 days	-	-242.45 days
Dry-erase White Board Markers	3,292	26,030.78	0.00	-	-	-
Hanging File Folder	40	90.77	0.00	270.0 days	-	-270.00 days
Pen	8,000	11,297.15	0.00	-	-	-
Image 1500 Series Desk Accessories	1,180	119,158.38	4.63	362.0 days	-	-362.00 days
Kings 5000 Series Desk Accessories	1,032	280,298.09	0.00	769.0 days	-	-769.00 days
Krugg 220 Arm Tilter-Brown	296	843,857.12	0.00	-	-	-
High Back Arm Tilter	786	120,492.15	0.00	-	-	-
2300 Series Posture Chair	120	9,736.26	0.00	-	-	-
Exec. Credenza 72in X 20in	36	2,663,156.63	0.00	-	-	-

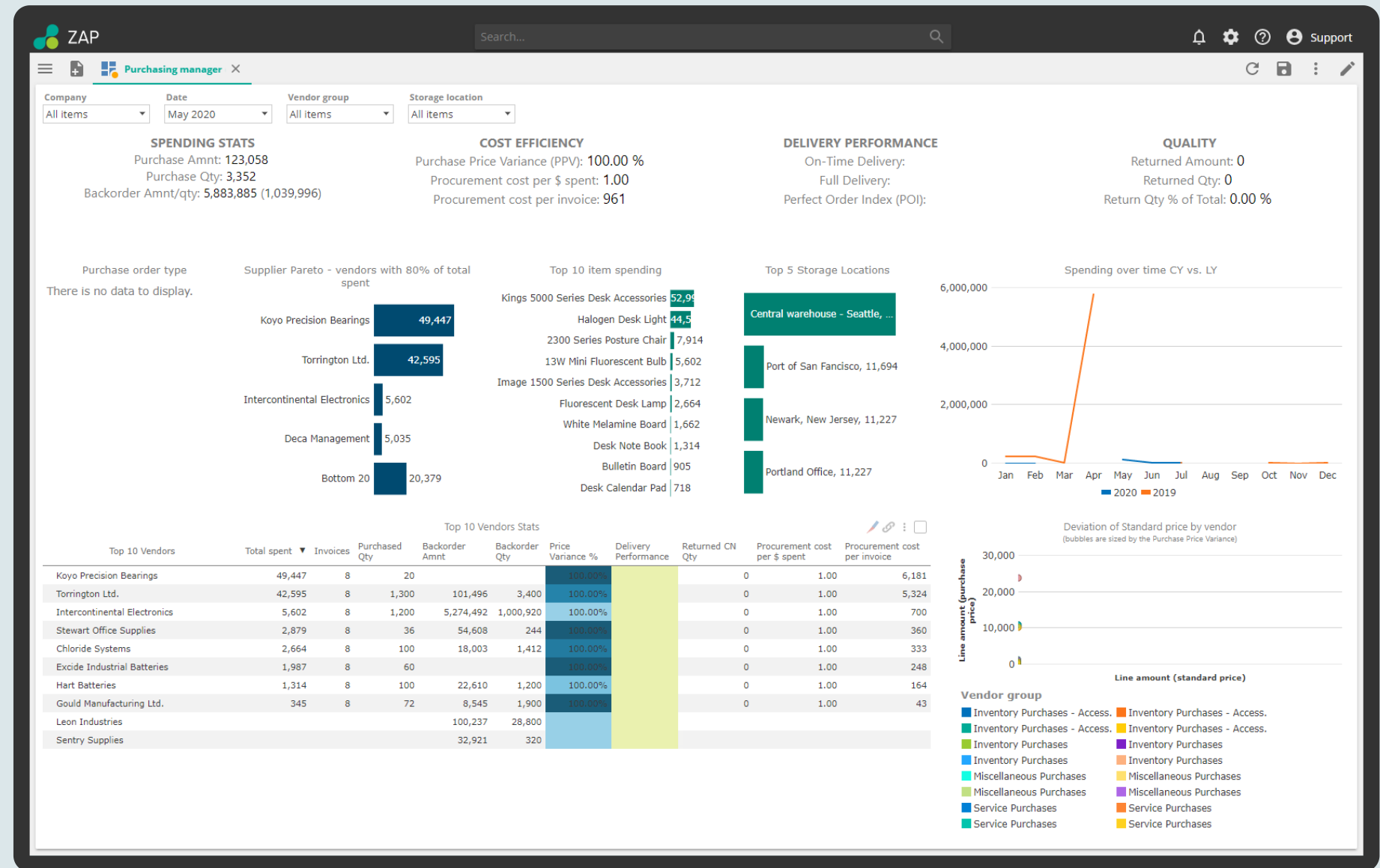
Purchasing Manager

This dashboard includes the following resources:

- Spending Stats Card
- Cost Efficiency Card
- Delivery Performance Card
- Quality Card; Purchase Order Status
- Supplier Pareto – Vendors w/80% of Total Spent
- Top 5 Purchase Invoice Line Amount by Warehouse
- Spending Over Time CY vs. LY
- Top 10 Vendors Stats
- Deviation of Standard Price by Vendor

Key metrics to get you started including:

- PPV Amount
- Purchase Price Variance (PPV)
- Procurement Cost per \$ Spent
- Procurement Cost per Invoice
- On-time Delivery
- Full Delivery %
- Perfect Order Index Inventory Turn
- Average Daily Sales Cost
- Average Inventory Valuation



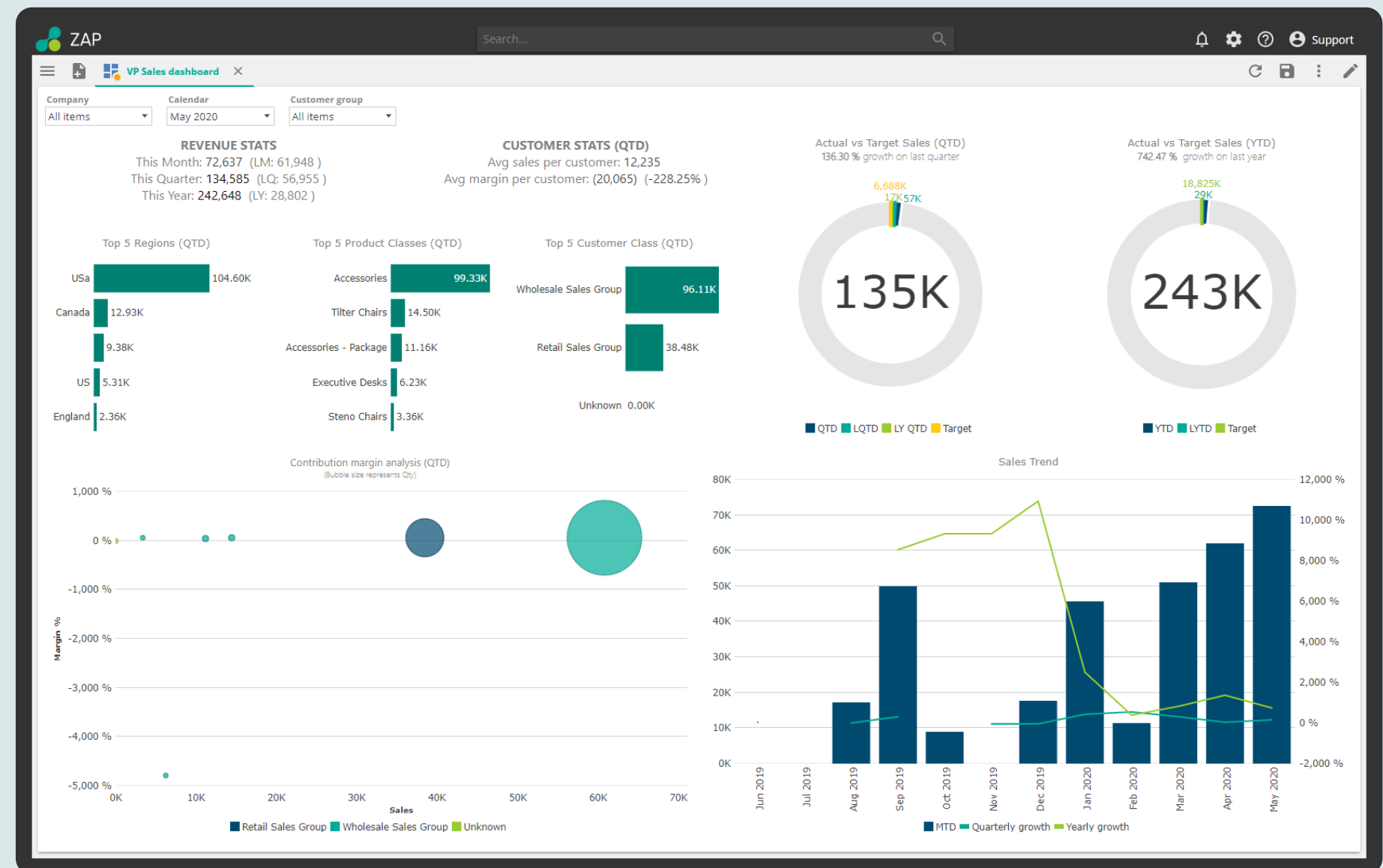
VP Sales Dashboard

This dashboard includes the following resources:

- Revenue Stats Card
- Customer Stats (QTD) Card
- Actual vs Target Sales (QTD)
- Actual vs Target Sales (YTD)
- Top 5 Regions (QTD)
- Top 5 Product Classes (QTD)
- Top 5 Customer Class (QTD)
- wContribution Margin Analysis (QTD)
- Sales Trend

Key metrics to get you started including:

- Number Customers with Sales
- Average Sales per Customer
- Average Margin per Customer
- Average Margin % per Customer
- Quarterly Revenue Growth %
- Yearly Revenue Growth %
- Contribution Margin %



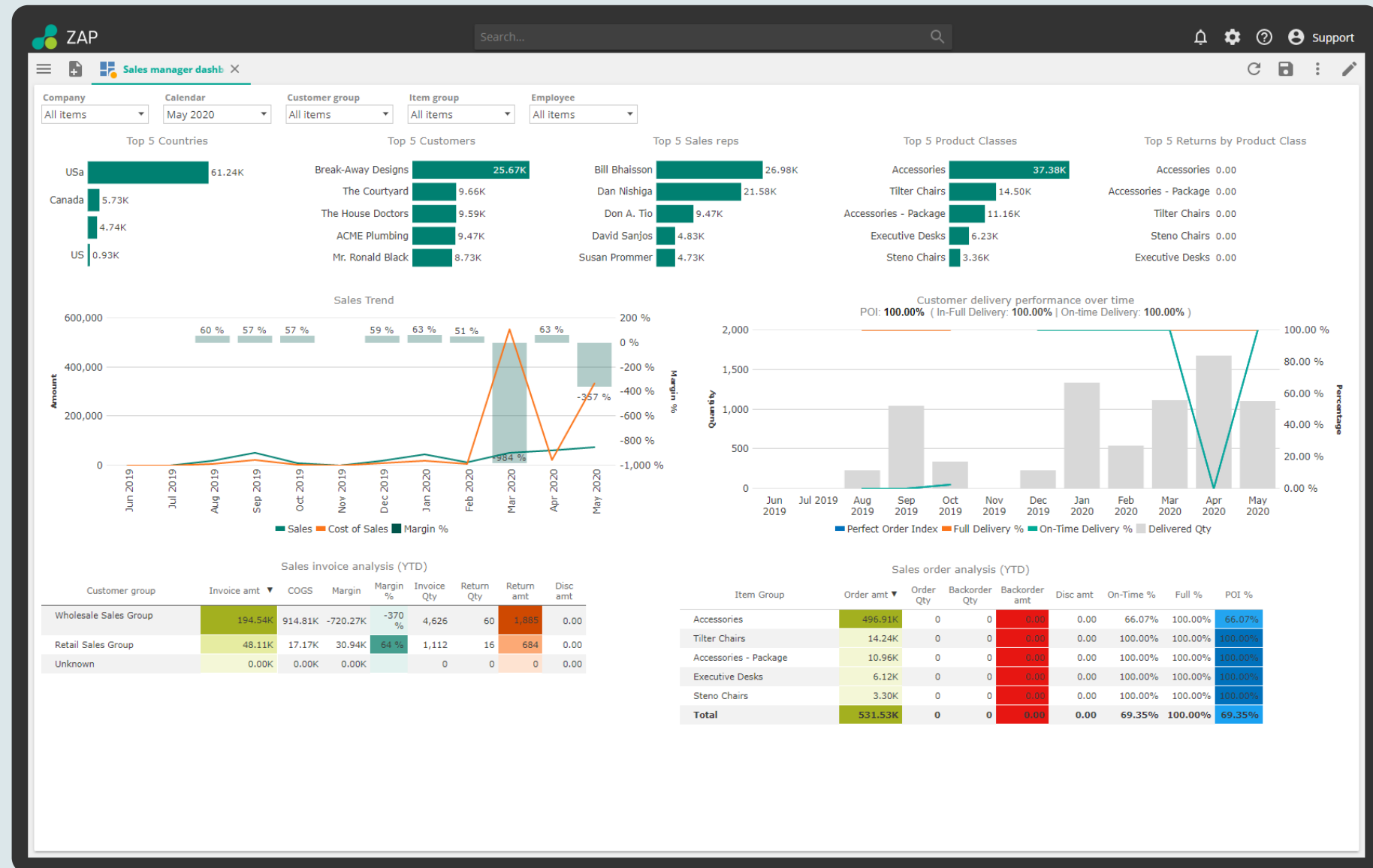
Sales Manager Dashboard

This dashboard includes the following resources:

- Top 5 Countries
- Top 5 Customers
- Top 5 Sales Reps
- Top 5 Product Classes
- Top 5 Returns by Product Class
- Sales Trend
- Customer Delivery Performance Over Time
- Sales Invoice Analysis (YTD)
- Sales Order Analysis (YTD)

Key metrics to get you started including:

- Contribution Margin
- Contribution Margin %
- In Full Delivery %
- On-time Delivery %
- Perfect Order Index (POI) %



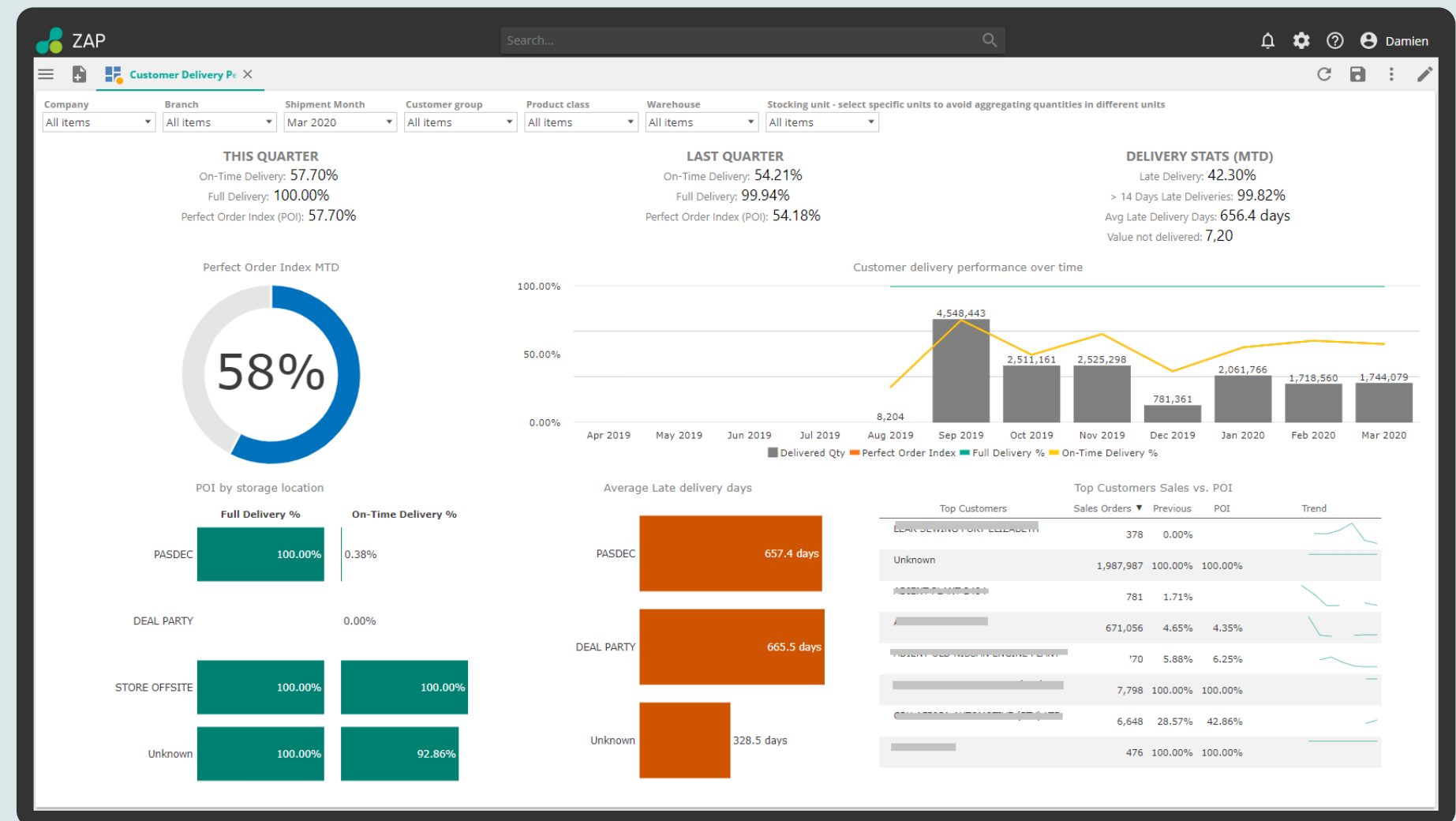
Customer Delivery Performance Dashboard

This dashboard includes the following resources:

- This Quarter Card
- Last Quarter Card
- Delivery Stats Card
- Perfect Order Index MTD
- Delivery Performance Over Time
- Perfect Order Index by Warehouse
- Average Late Delivery Days
- Top Vendors vs. POI

Key metrics to get you started including:

- On-time Delivery
- Full Delivery
- Perfect Order Index
- More than 14 Days Late %
- Average Late Delivery Days
- Value Not Delivered



Production Overview Dashboard

The Production dashboard gives users the much-needed high level overview. Production controllers at-a-glance can gain insight to production capacity and efficiency.

The dashboard can assist in scheduling and production capacity planning. Efficiency metrics give valuable feedback on performance and output quality.

This dashboard includes the following resources:

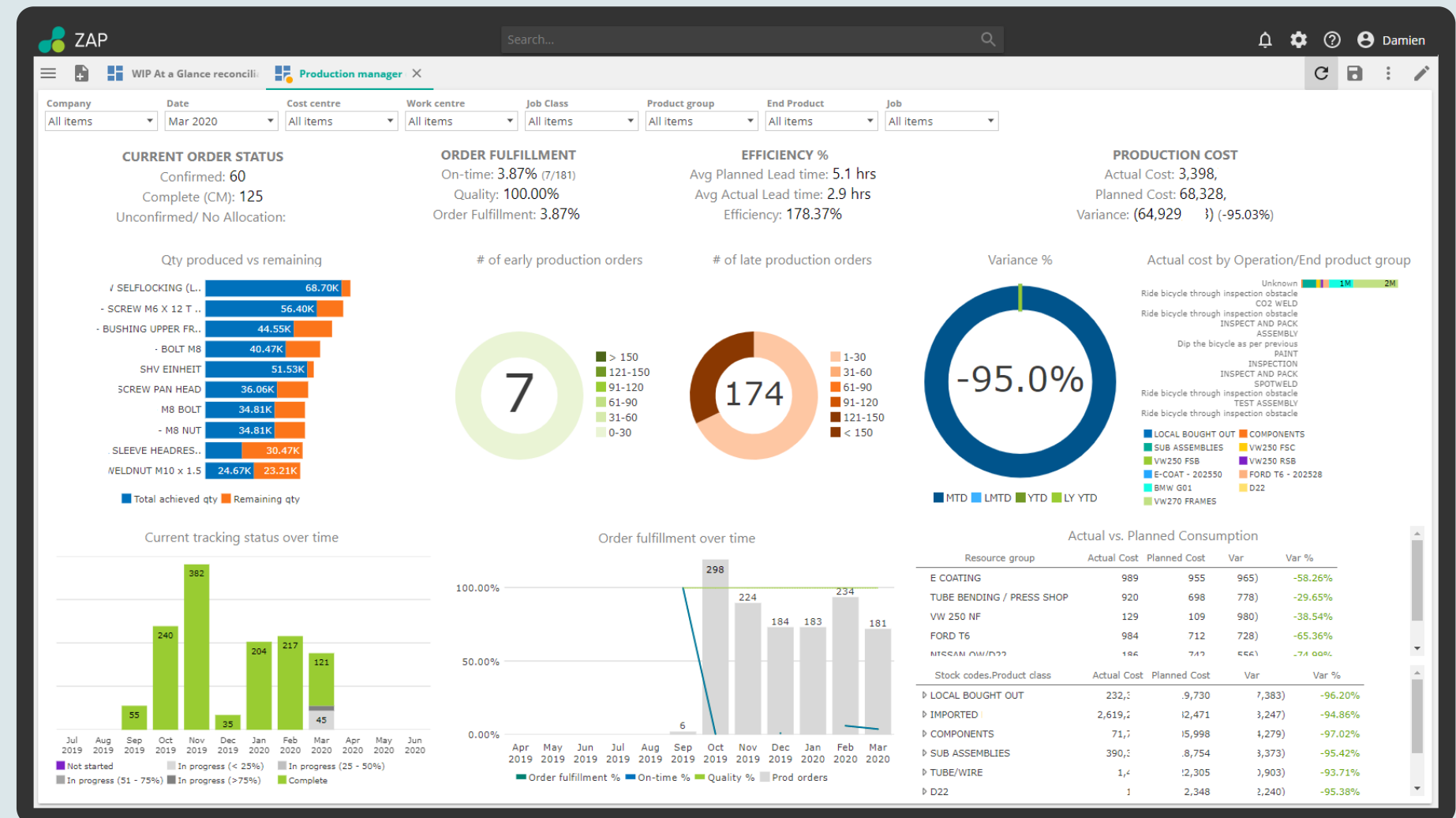
- Current Order Status Card
- Order Fulfilment Card
- Efficiency Card
- Production Costs Card
- Qty Produced vs. Remaining
- Number of Early Production Orders
- Number of Late Production Orders
- Actual Costs by Cost Center
- Actual vs. Planned Consumption

Key metrics to get you started including:

- On-Time %
- Quality %
- Order Fulfilment
- Average Planned Lead Time
- Average Actual Lead Time
- Planned Cost Amount
- Actual Cost Amount
- Cost Variance

The Production module also includes:

- Actual vs. Planned Consumption Costs Analysis
- Order Fulfilment Analysis
- Total Job Hours by Work Center
- Production Order Status Analysis
- Production Tracking Order Status Analysis
- Produced Items Stats

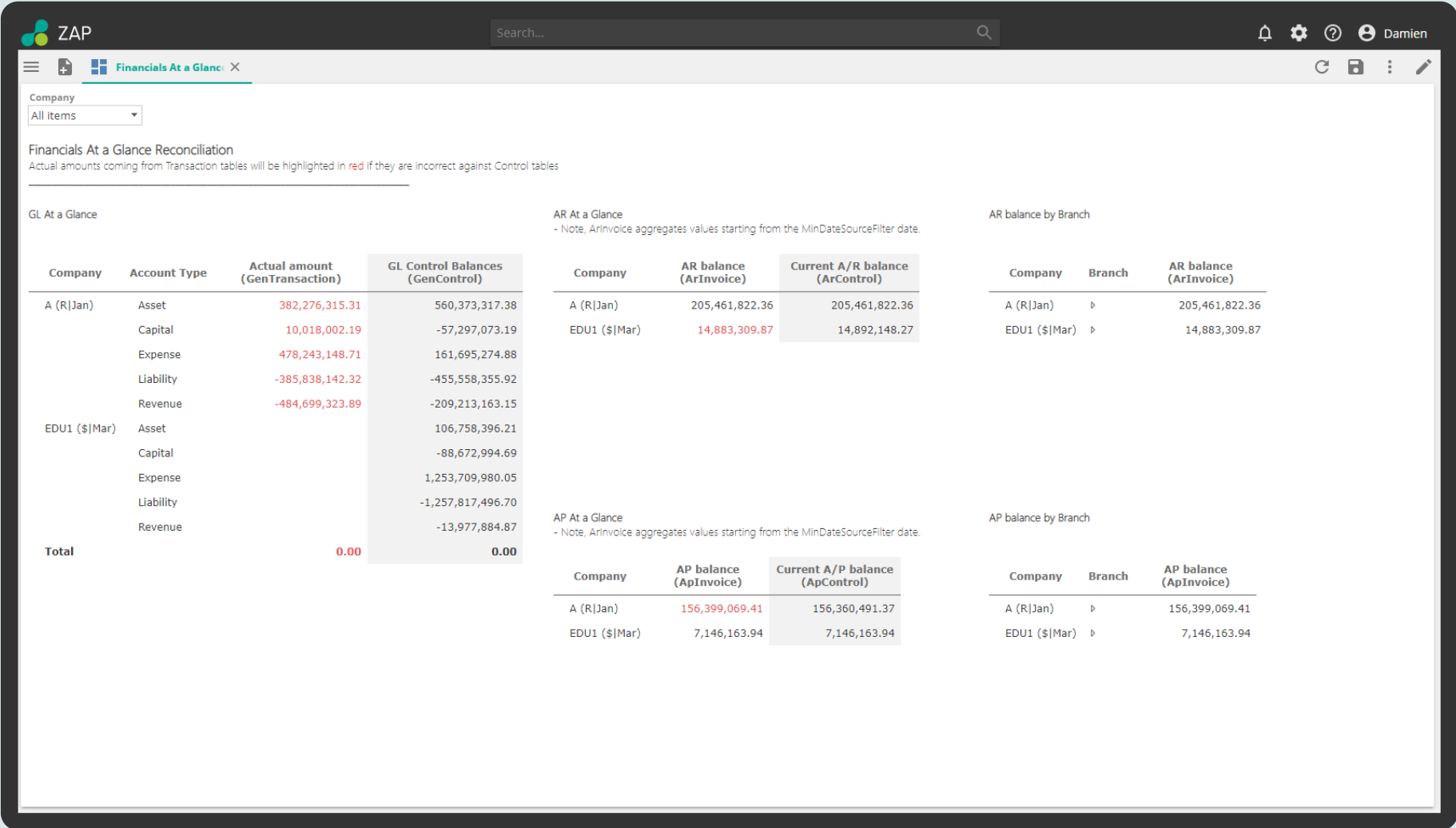


Financials At-A-Glance Dashboard

This dashboard is typically used to reconcile data versus the at-a-glance reports in SYSPRO, by comparing amounts coming from transaction tables (used by the analytics) to amounts in Control Tables (used by the SYSPRO at-a-glance screens).

Any discrepancies between the two amounts will be highlighted. Using this dashboard, reconciliation can be done for the GL, AR, and AP modules.

It is also possible to quickly view AR and AP balances by Branch and reconcile this with the total.



Inventory At-A-Glance Dashboard

This dashboard can be used to reconcile data versus the Inventory At-a-Glance report in SYSPRO, by comparing amounts coming from InvMovement to amounts in InvWarehouse.

Any discrepancies between the two amounts are highlighted. It is possible to click on specific items in the InvMovements cell to filter and compare with the InvWarehouse cell.

If discrepancies are detected in this dashboard, it is recommended to investigate the cause of the discrepancies in SYSPRO.

The screenshot shows the ZAP 'Inventory At a Glance' dashboard. At the top, there are filters for Company (EDU1 (\$ Mar)), Warehouse (All Items), Item group (All Items), Stock code (All Items), and Supplier (All Items). Below the filters, there is a section for 'Inventory At a Glance Reconciliation report' with a note: 'Quantities coming from InvMovement will be highlighted in red if they are incorrect against InvWarehouse. Click on specific stock codes to see detected discrepancies over the last 12 months.'

The dashboard contains two main tables:

InvMovements

Warehouse	Item	On Hand	Current Valuation	Previous Month 1	Previous Month 2	Previous Month 3	Previous Month 4	Previous Month 5	Previous Month 6	Previous Month 7	Previous Month 8	Previous Month 9	Previous Month 10	Previous Month 11
Eastern Warehouse	A100	1,833.00												
	A101	1,565.00												
	A102	2,699.00												
	A103	74.00												
	A110	36.00												
	A111	23.00												
	A112	584.00												
	A113	9.00												
	A120	23.00												

InvWarehouse (At a Glance) - used in the Analytics

Warehouse	On Hand	Current Valuation	Previous Month 1	Previous Month 2	Previous Month 3	Previous Month 4	Previous Month 5	Previous Month 6	Previous Month 7	Previous Month 8	Previous Month 9	Previous Month 10	Previous Month 11
Eastern Warehouse	163,030.00	4,180,889.52	20,187,861.86	19,250,008.75	17,005,562.05	16,407,223.00	16,492,199.93	16,220,236.44	16,054,083.67	15,753,871.38	15,608,818.31	15,427,503.45	13,770,000.00
Finished Goods Warehouse	12,120.00	219,499.05	18,722,556.78	11,630,638.24	0.00	0.00	0.00	0.00	0.00	0.00	0.00	0.00	0.00
Floor Stock Warehouse	183.40	825.30	2,295.00	180.00	180.00	0.00	0.00	0.00	0.00	0.00	0.00	0.00	0.00
Northern Warehouse	274,919.50	3,970,117.44	47,881,387.58	45,431,340.72	43,492,260.45	43,420,365.98	43,226,421.28	43,008,843.40	42,573,687.64	41,622,009.30	41,403,168.44	41,076,801.62	42,310,000.00
Returnable Items	2,000.00	25,500.00	0.00	0.00	0.00	0.00	0.00	0.00	0.00	0.00	0.00	0.00	0.00
Raw Materials Warehouse	11,957.80	354,715.16	9,607.50	1,974,850.00	1,979,850.00	0.00	0.00	0.00	0.00	0.00	0.00	0.00	0.00
Southern Warehouse	116,627.00	2,378,373.00	14,677,894.56	14,797,686.95	14,403,009.47	14,366,746.48	13,844,722.14	12,921,910.73	12,700,543.84	12,400,336.05	12,327,809.42	12,327,809.42	11,870,000.00
Subassembly Warehouse	1,000.00	573,515.28	0.00	3,340,475.12	0.00	0.00	0.00	0.00	0.00	0.00	0.00	0.00	0.00
Specials for Product Config.	27,784.00	37,400.11	1,144,687.96	1,028,656.00	900,074.00	769,668.00	641,998.00	514,328.00	385,746.00	257,164.00	128,582.00	0.00	0.00
South West Warehouse	4,847.00	1,551,040.00	0.00	0.00	0.00	0.00	0.00	0.00	0.00	0.00	0.00	0.00	0.00
Total	614,468.70	13,291,874.86	102,626,291.25	97,453,835.79	77,780,935.97	74,964,003.46	74,205,341.36	72,665,318.57	71,714,061.15	70,033,380.73	69,468,378.17	68,832,114.49	68,000,000.00

WIP At-A-Glance Dashboard

This dashboard can be used to reconcile data versus the WIP At-a-Glance report in SYSPRO, by comparing amounts coming from WipJobAllLab & WipJobAllMat (both used in the Analytics) to amounts in WipMaster (SYSPRO at-a-glance).

Any discrepancies between the two amounts will be highlighted.

It is possible to click on specific jobs in the 'WipJobAllLab | WipJobAllMat' cell to filter and compare with the 'WipMaster' cell. If discrepancies are detected in this dashboard, it is recommended to investigate the cause of the discrepancies in SYSPRO.

WIP At a Glance Reconciliation report
 Quantities coming from WipJobAllLab and WipJobAllMat will be highlighted in red if they are incorrect against WipMaster. Click on specific job codes to see detected discrepancies over the last 3 months.
 - Note, WipJobAllLab and WipJobAllMat aggregate values starting from the MinDataSourceFilter date.

WipJobAllLab | WipJobAllMat - used in Analytics

Job	Hours booked to date 1	Hours booked to date 2	Hours booked to date 3	Labor costs to date 1	Labor costs to date 2	Labor costs to date 3	Material costs to date 1	Material costs to date 2	Material costs to date 3
000000000000137	975.5 hrs	975.5 hrs	975.5 hrs	55,606.00	55,606.00	55,606.00	380,555.33	380,555.33	380,555.33
000000000000140	1,601.0 hrs	1,601.0 hrs	1,601.0 hrs	91,257.00	91,257.00	91,257.00	1,044,476.39	1,044,476.39	1,044,476.39
000000000000141	1,841.5 hrs	1,841.5 hrs	1,841.5 hrs	104,959.65	104,959.65	104,959.65	1,009,430.50	1,009,430.50	1,009,430.50
000000000000142	1,841.5 hrs	1,841.5 hrs	1,841.5 hrs	104,959.65	104,959.65	104,959.65	985,415.50	985,415.50	985,415.50
000000000000146	163.0 hrs	163.0 hrs	163.0 hrs	9,293.50	9,293.50	9,293.50	134,529.55	134,529.55	134,529.55
000000000000147	66.4 hrs	66.4 hrs	66.4 hrs	3,960.20	3,960.20	3,960.20	26,900.65	26,900.65	26,900.65
000000000000148	50.0 hrs	50.0 hrs	50.0 hrs	2,850.00	2,850.00	2,850.00	32,810.50	32,810.50	32,810.50
000000000000149	57.8 hrs	57.8 hrs	57.8 hrs	3,291.60	3,291.60	3,291.60	31,525.00	31,525.00	31,525.00
000000000000150	57.8 hrs	57.8 hrs	57.8 hrs	3,291.60	3,291.60	3,291.60	29,675.00	29,675.00	29,675.00
000000000000151	27.5 hrs	27.5 hrs	27.5 hrs	1,567.50	1,567.50	1,567.50	9,330.50	9,330.50	9,330.50

WipMaster (At a Glance)

Job	Hours booked to date 1	Hours booked to date 2	Hours booked to date 3	Labor costs to date 1	Labor costs to date 2	Labor costs to date 3	Material costs to date 1	Material costs to date 2	Material costs to date 3
000000000000137	975.5	975.5	975.5	55,606.00	55,606.00	55,606.00	380,555.33	380,555.33	0.00
000000000000140	1,601.0	1,600.0	1,600.0	91,257.00	91,200.00	91,200.00	1,044,476.39	1,043,824.00	701,200.00
000000000000141	1,841.5	1,840.3	1,840.3	104,959.65	104,894.10	104,894.10	1,009,430.50	1,008,800.00	24,000.00
000000000000142	1,841.5	1,840.3	1,840.3	104,959.65	104,894.10	104,894.10	985,415.50	984,800.00	0.00
000000000000146	163.0	163.0	0.0	9,293.50	9,293.50	0.00	134,529.55	134,526.40	0.00
000000000000147	66.4	66.4	0.0	3,960.20	3,960.20	0.00	26,900.65	26,897.50	0.00
000000000000148	50.0	50.0	0.0	2,850.00	2,850.00	0.00	32,810.50	32,810.50	0.00
000000000000149	57.8	57.8	0.0	3,291.60	3,291.60	0.00	31,525.00	31,525.00	0.00
000000000000150	57.8	57.8	0.0	3,291.60	3,291.60	0.00	29,675.00	29,675.00	0.00
000000000000151	27.5	27.5	0.0	1,567.50	1,567.50	0.00	9,330.50	9,330.50	0.00
000000000000152	0.6	0.0	0.0	31.35	0.00	0.00	182.79	0.00	0.00



www.syspro.com

Copyright © 2022 SYSPRO Impact Software. All rights reserved.

All brand and product names are trademarks or registered trademarks of their respective holders.